

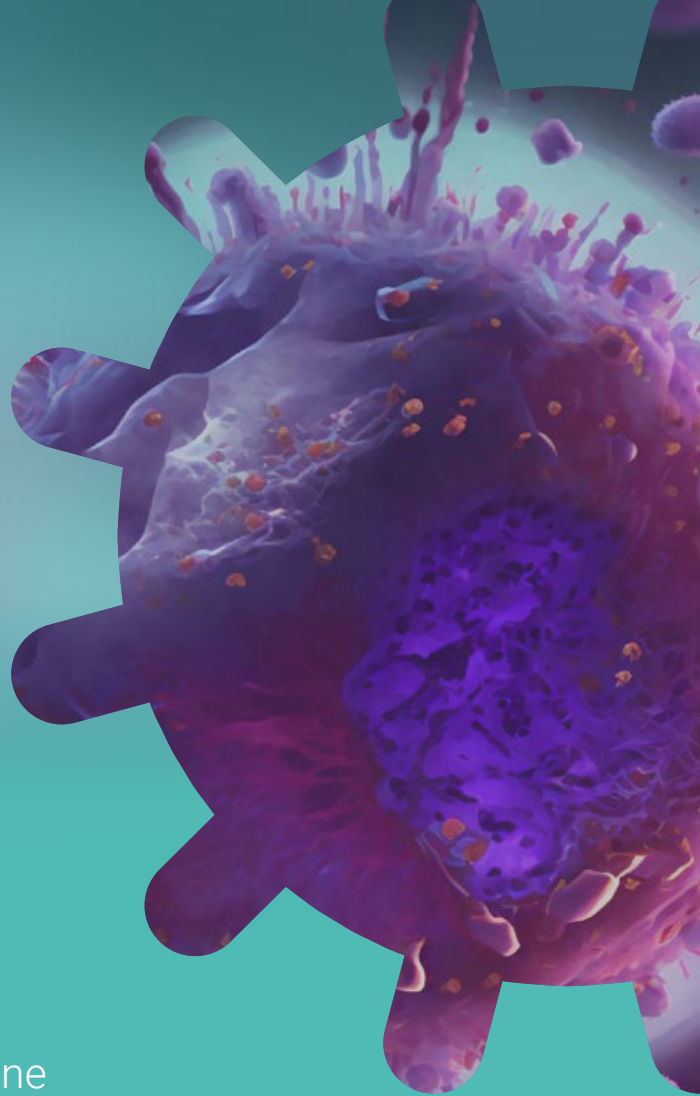


RESPIRATORY VIRUS summit

The burden of
RSV Disease and
new intervention
strategies

Save the date

21 June 2023 | Brussels & online



ESWI is delighted to present the 2023 RSV Summit on the Burden of Disease and New Intervention Strategies. The idea for the event stems from the increased rates of RSV infections, and from the rapid pace of new technical and vaccine developments. Therefore ESWI believes the time is right to put a spotlight on RSV - and in particular on the Science-and-Policy Interface of RSV - this year.

Respiratory Syncytial Virus (RSV) is a common virus that affects all age groups with varying clinical effects. The virus is transmitted easily through coughing and sneezing with droplets containing the virus. RSV disease is a major burden in young children and older adults, causing hospitalisation and in acute cases, death.

Prevention and treatment strategies could be available soon as multiple clinical trials are being held and are showing a high efficacy.

Following up on our 2021 Webinar "RSV in a COVID-19 era", ESWI will be organising a one day hybrid summit focusing on the health and economic burden of RSV disease and the prospect of possible solutions in the coming years.

organised by

ESWI

SCIENTISTS FIGHTING
INFLUENZA AND
OTHER ACUTE
RESPIRATORY VIRUSES

CHAIRS

Prof. Peter Openshaw
ESWI Board Member,
Imperial College London,
United Kingdom



Prof. Stefania Maggi
ESWI Board Member,
Neuroscience Institute,
Padova, Italy



HOST

Prof. Ab Osterhaus
ESWI Chair, TiHo,
Germany



LOCATION

Townhall Europe
Square de Meeûs 5-6,
1000 Brussels, Belgium

More information & registration via
www.respiratoryvirussummit.org

Preliminary Programme

08:30 – 09:00	REGISTRATION AND COFFEE
09:00 – 09:05	WELCOME BY THE CO-CHAIRS — Stefania Maggi, <i>ESWI Board Member, Neuroscience Institute, Padova, Italy</i> — Peter Openshaw, <i>ESWI Board Member, Imperial College London, United Kingdom</i>
09:05 – 10:30	KEYNOTE LECTURES WITH SEPARATE Q&A
	Burden of disease in infants — Janet Englund, <i>Seattles Children's Hospital, USA</i>
	Burden of disease in older adults — Ann Falsey, <i>University Of Rochester School Of Medicine, USA</i>
	Epidemiology and Surveillance — John Paget, <i>Nivel, The Netherlands</i>
10:30 – 11:00	COFFEE BREAK
11:00 – 13:00	KEYNOTE LECTURES WITH SEPARATE Q&A
	Diagnostics and POCT — Dexter Wiseman, <i>Imperial College London, United Kingdom</i>
	Therapeutics — Johan Neyts, <i>KU Leuven, Belgium</i>
	Potential economic benefit of RSV prevention in Europe — Maarten Postma, <i>Rijksuniversiteit Groningen, The Netherlands</i>
13:00 – 14:00	LUNCH
14:00 – 15:15	WHAT'S IN THE PIPELINE? With separate Q&A
	Vaccines - what's in the pipeline — Natalie Mazur, <i>University Medical Center Utrecht, The Netherlands</i>
	Monoclonal antibodies - what's in the pipeline — Eric Simoes, <i>Colorado School of Public Health, USA</i>
	Industry partners quick fire debate
15:15 – 15:45	COFFEE BREAK
15:45 – 17:15	SCIENCE POLICY INTERFACE DEBATE moderated by Ab Osterhaus, <i>ESWI Chair</i>
	How to ensure/prepare for access to immunisation programmes — EHMA (European Health Management Association), George Valliotis — IFA (International Federation of Ageing), Jane Barrat — ESPID (European Society For Paediatric Infectious Diseases), Terho Heikkinen — EUREGHA (European Regional and Local Health Authorities), Solvejg Wallyn
17:15 – 17:30	CONCLUSIONS — Stefania Maggi, <i>ESWI Board Member</i> — Peter Openshaw, <i>ESWI Board Member</i>
17:30 – 19:00	COCKTAIL RECEPTION

organised by

ESWI

In collaboration with



Summit partners



Attendance of the hybrid Summit is free of charge but registration is mandatory. A limited number of live seats are available. Following by live stream is unlimited.

www.respiratoryvirussummit.org